



# *SURFER* *BIKE*



Be Sure  
to Read this  
Manual  
Before Use

# Operation Manual

**UNIS**<sup>®</sup>  
UNIVERSAL SPACE

[www.universal-space.com](http://www.universal-space.com)

# CONTENT

Important Safety Instructions.....	2
1. SPECIFICATIONS.....	4
2. PACKAGE CONTENTS.....	5
3. PART NAMES.....	6
4. SET UP & INSTALLATION.....	7
5. HOW TO PLAY.....	10
6. GAME OPTION.....	10
7. ERROR MESSAGE AND RECOVERY.....	13
8. MAINTENANCE, INSPECTION.....	14
9. OVERALL CONSTRUCTION.....	15

**Non-technical personnel who do not have technical knowledge and Expertise should refrain from performing such work that this manual require or perform tasks which are not explained in this manual. Failing to comply can cause severe accidents such as electric shock or other serious injuries. All repairs must be performed to original manufacturer specifications.**

**WARNING: To reduce the risk of fire, electric shock or personal injury, unplug or disconnect the machine from the power supply before servicing.**

Thank you for purchasing **Surfer Bike** from Universal Space. We hope you enjoy the product.

This manual contains valuable information about how to operate and maintain your game machine properly and safely. It is intended for the owner and/or personnel in charge of product operation. Carefully read and understand the instructions.

If you need any help during installation and setup please utilize this manual and troubleshooting guide. If the product fails to function properly, *non-technical personnel should under no circumstance attempt to service the machine.* Contact your distributor or manufacturer for help.

Before use, please read **IMPORTANT SAFETY INSTRUCTIONS.**

## **IMPORTANT SAFETY INSTRUCTIONS**

**To ensure the safe usage of this product, carefully read and understand these instructions before operating your game.**

**Save these instructions for future reference.**

Use this product only as described in this manual. Other uses not recommended may cause fire, electric shock or personal injury. Unplug the game from the outlet when not in use, when moving from one location to another, and before cleaning/servicing.

Explanations which require special attention are indicated by signs of warning. Depending on the potential hazardous degree, the terms: **NOTE**, **NOTICE**, and **WARNING** are used.

**NOTE:** A NOTE indicates useful hints or information about product usage.

**NOTICE:** A NOTICE indicates potential damage to product and how to avoid the problem.

**WARNING:** A WARNING indicates a potential for product damage or serious personal injury.

It is important to understand the meaning of the following HAZARD SIGNS before continuing:

### **High Voltage and Shock Hazard:**

High voltage can cause electric shock.  
Turn off/unplug power before servicing.



### **High Temperature Hazard:**

This part may cause scalding.  
Do not touch. Surface may be hot.



### **No Touching Hazard:**

This part may be hot or can cause electric shock.  
Do not touch.



Use the following safety guidelines to help ensure your own personal safety and to help protect your equipment and surrounding environment from potential damage.



**This product is an indoor game machine. Do not install outdoors.**

Avoid installing in the following places to prevent fire, electric shock, injury and/or machine malfunctioning:

- Places subject to rain/moisture, or places subject to high humidity.
- Places subject to direct sunlight, or places subject to extremely hot or cold temperatures to ensure that it is used within the specified operating range.
- Places where inflammable gas may be present or in the vicinity of highly inflammable/volatile chemicals or items that can easily catch fire
- On unstable or sloped surfaces. The machine may topple or cause unforeseen accidents.
- Vicinity of fire exits, fire extinguishers etc that may block/prevent safety measures

**IMPORTANT NOTE:**

**ALL REPAIRS MUST BE DONE TO ORIGINAL MANUFACTURER SPECIFICATIONS.  
FAILURE TO DO SO VOID ALL WARRANTIES AND OPERATOR ASSUMES ALL  
RISKS.**

Note: The contents of this manual may be updated without notice.

# 1. SPECIFICATIONS


Rated power supply: AC220-240V 50/60Hz

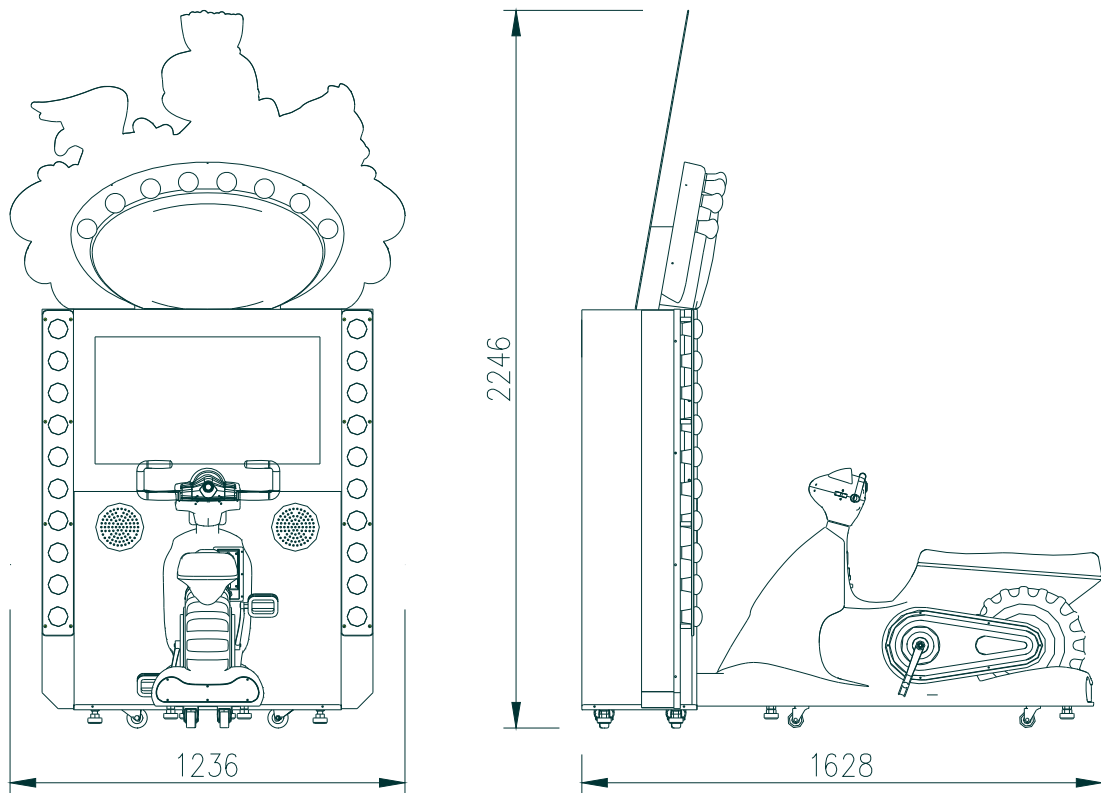
Min. Power consumption: 220W

Max. Power consumption: 250W


Dimensions: W1236 × D1628 × H2246(mm)

Weight: Approximately 250kg

 **NOTICE:** After turning off the game, please wait at least 1 minute before restarting again.







**Note:** Game parameters are subject to change without notice.

 **NOTICE:** After turning off the game, please wait at least 1 minute before restarting again.

## 2. PACKAGE CONTENTS

Open the package and make sure all the items are included:

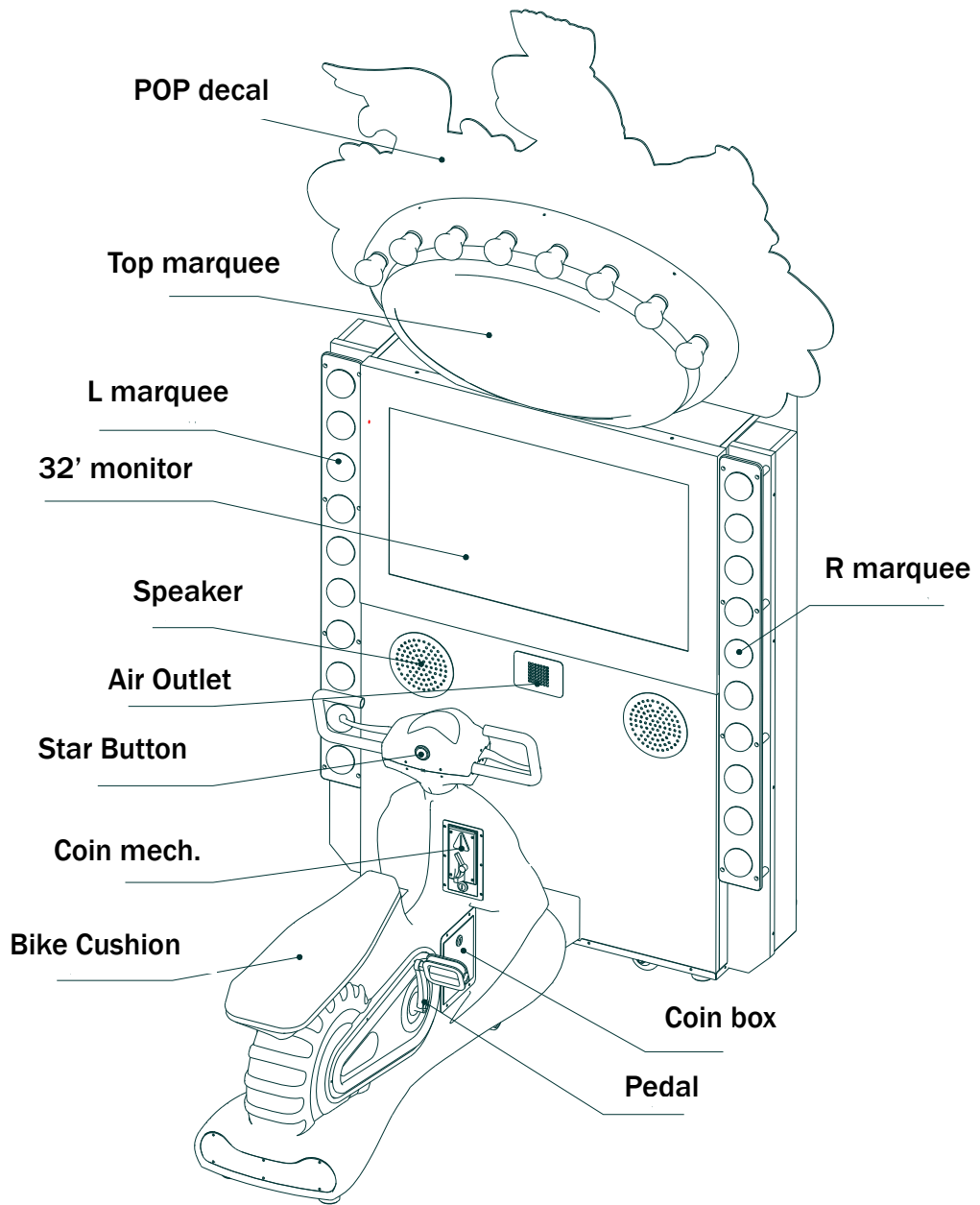
- 1 x Body Assembly
- Following accessories

NO.	Part No.	Code	Name	SPEC.	Qty	Illustration
1	S121-309-000	20101020036	Cross recessed pan head screw suite	M4×16 Color Zinc	7	
2	S121-340-000	20104020026	Cross recessed hexagon screw kit	M8×25 Color Zinc	4	
3	S121-342-000	20104023011	Cross recessed hexagon screw kit	M8×12 Color Zinc	4	
4	S121-354-000	20113000033	C class big flat washer	Φ4×Φ12×1h	7	
5	S121-427-000	21901000013	Fuse	Φ5×20mm T10A 250VAC	1	
6	S121-453-000	23301000001	Power cord	10A/250V-1.8M	1	
7	S121-409-000	25300171002	Key	171	2	
8	S121-411-000	25300172002	Key	171B	2	
9	S121-461-000	41300000005	Memory stick	8G	1	
10	S121-729-000	41440000024	Manual	English	1	
11	S121-462-000	4.06.13.160028	Wrench	13-15	1	

If any items are found to be missing, please contact your sales representative for help immediately.

**NOTE:** Part models are subject to change without notice.

### 3. PART NAME



## 4. SET UP & INSTALLATION

**!** This product is an indoor game machine. Do not install outdoors.

- Refer to IMPORTANT SAFETY INSTRUCTIONS (Pg. 2) for places to avoid
- Place the unit on a dry level surface
- Ventilation openings in the back of the unit must not be obstructed by objects or by wall.

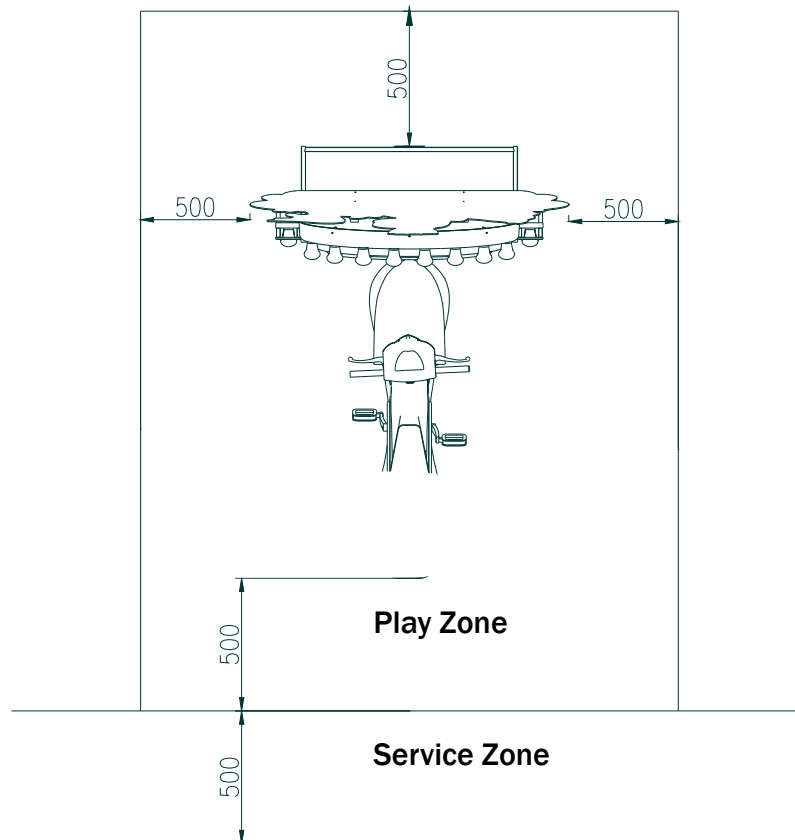
### 4.1 Play Zone

This machine requires space for playing and for maintenance as shown below.

Leave space around the game upon installation:

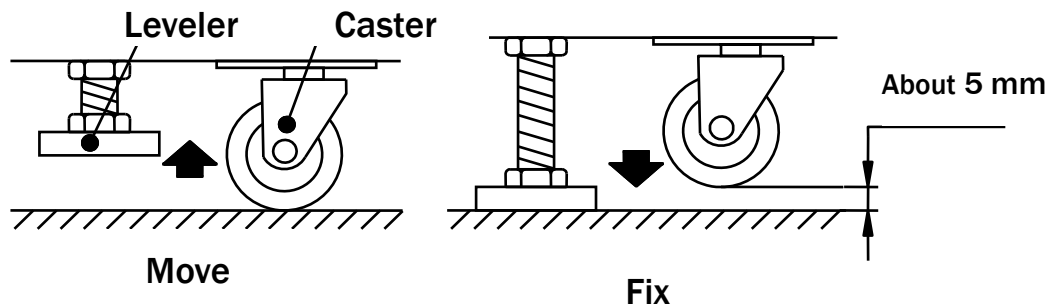
Length: 3.7M

Width: 1.6M



## 4.2 Level Adjustment

Install this machine on a flat surface. Adjust levers to lift casters off the ground to level the game. If the game is installed on an unsuitable floor, it could cause game malfunction. To secure the game, adjust the Leveler down until it touches the floor, lifting the casters off the ground by 5mm. Repeat the same for all levelers.

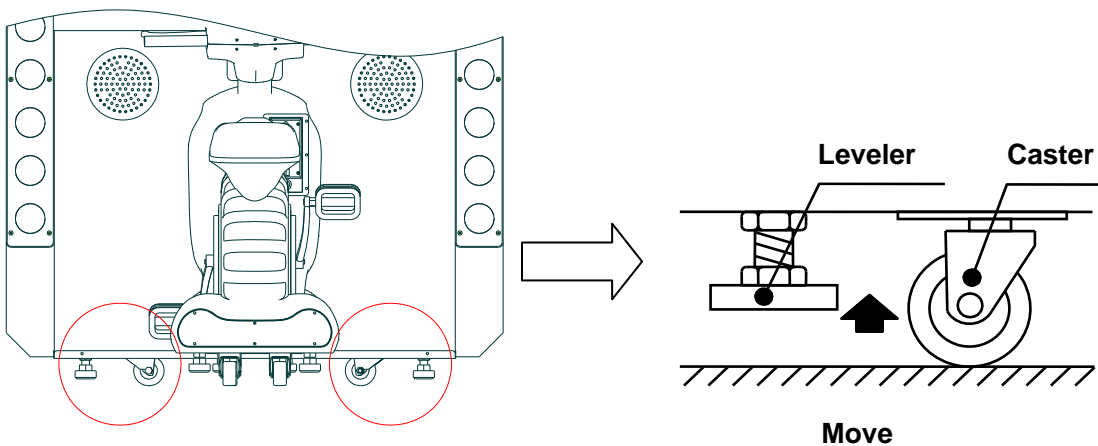


### ! NOTICE

Make sure the machine is level with the ground and all the adjustable legs should stick to the floor closely.

## 4.3 Transporting the Game

If you need to move the game, adjust the levelers back to an “up” position so the casters touch the ground.



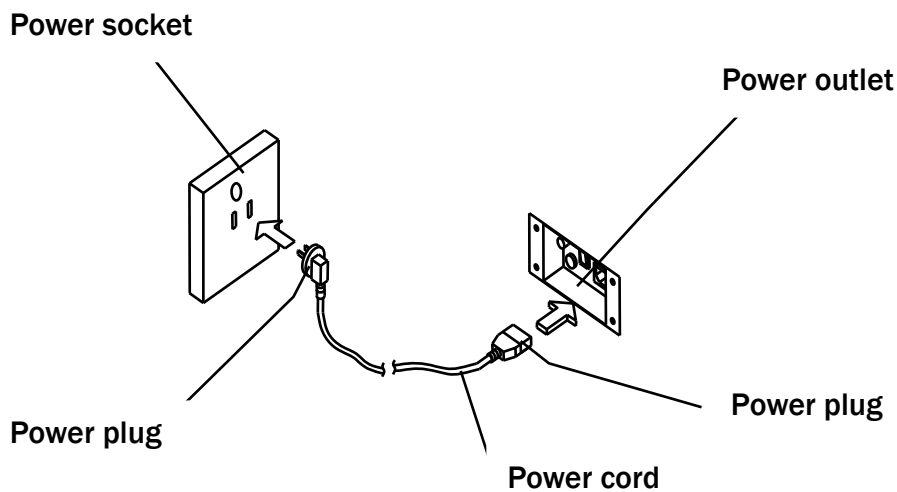
### ! NOTICE

- Be careful not to damage the machine during transport.
- The machine should be handled with care when bringing it down from a higher level.
- Always unplug the game before moving.
- Keep the machine in upright position during transport.
- For longer distance transport, package the game properly to prevent damages

## 4.4 Connecting Power

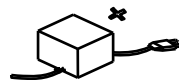
**! WARNING:** Check the voltage rating before you connect the equipment to an electrical outlet to ensure that the required voltage and frequency match the available power source. Please refer the label of the machine.

- ⦿ Do not plug the equipment power cables into an electrical outlet if the power cable is damaged.
- ⦿ Avoid putting many loads on one electrical outlet as it could generate heat and fire resulting from overload.
- ⦿ Connect the grounding conductor to the earth terminal (GND):

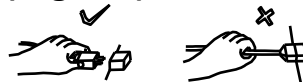


**! WARNING**

Ensure no heavy objects rest on the power cord. Check to make sure the game cabinet does not sit on the power cord as this could damage the cord and become hazardous.



To disconnect the game, grip the plug and pull it from the wall outlet. Never pull by the cord.



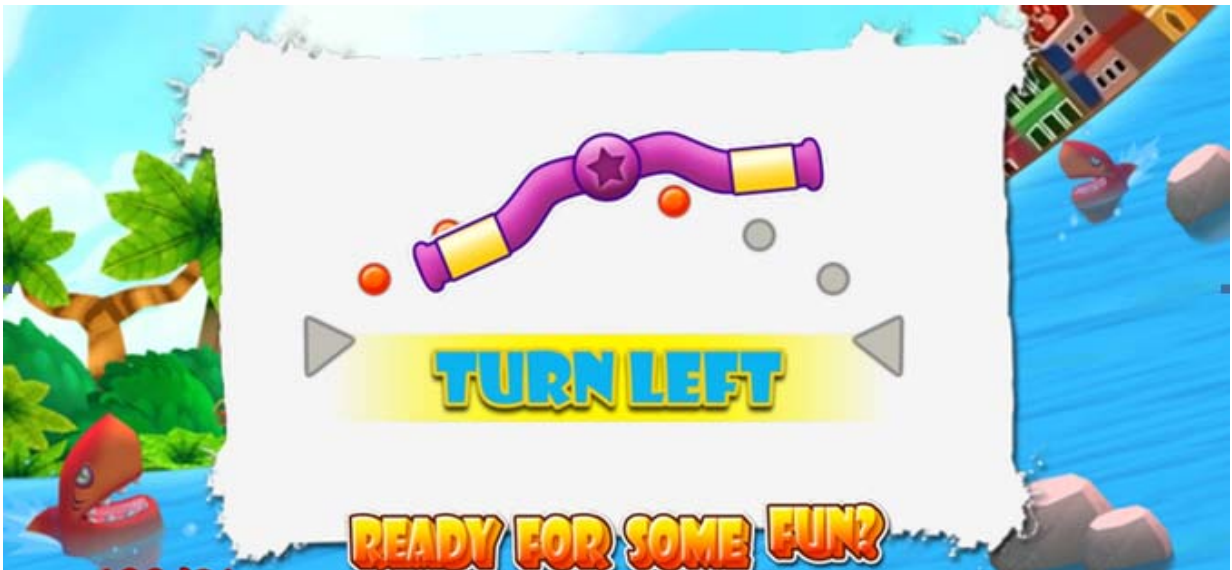
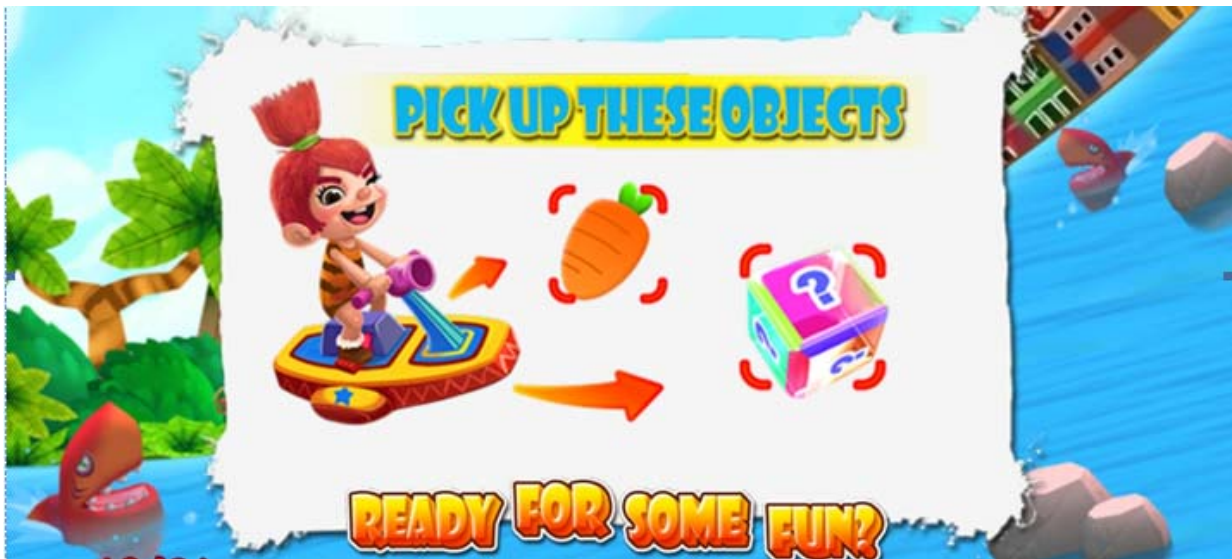
To prevent electric shock, do not touch the power plug when hand is wet.



Ensure that nothing rests on the power cord and that it is not located where it can be stepped on or tripped over.



## 5. HOW TO PLAY



## 6. GAME OPTIONS

- Main Menu
- Game Mode
- Input Test
- Output Test
- Game Reset
- Date/Time Setting
- Language/语言/日本語
- Bookkeeping
- Daily Record
- Back to game

**6. 1 Game mode**

Item	Option	Description
Free Play	ON/OFF	Turn on/off the free play mode.
Tickets Out	ON/OFF	Turn on/off payout tickets.
Demo Music	ON/OFF	Turn on/off the demo music.
Memory Save	ON/OFF	Whether memorize inserted coins after power off.
Volume	0-10	0 is mute, 10 is max.
Coins per Round	1-10	Coin needed to insert for one game.
1 <sup>st</sup> Tickets	1-10	Set the winner ticket payout amount..
2 <sup>nd</sup> Tickets	1-10	Set the 2 <sup>nd</sup> place ticket payout amount.
Mercy Ticket	0-10	Set the ticket payout after game is over.
Fixed Ticket	0-100	Fixed ticket setting. "0" is fixed ticket off.
Game laps	1-3	Set laps to play in one game.
Game time (s)	90,120,150,180,210,240,270	Set time to play one game.
Wind setting	ON/OFF	Turn on/off the vent flowing when playing
Ticket mode	Store in Memory / Call Attendant	Whether continue to play the game when ticket is owed.
Back & Save		Save the settings and back to the main menu
Back		Back to the main menu without saving

**6.2 Input Test**

Input Test Press Settings button to back		Description
Coin 1	OFF	ON is enable, OFF is unable
Service Button	OFF	ON is enable, OFF is unable
Reset Button	OFF	ON is enable, OFF is unable
1P Select Button	OFF	ON is enable, OFF is unable
1P Brake	OFF	To test the present brake POT value
1P Wheel Pot	0	To test the present steering wheel POT value
1P speed	0	To test the pedal speed value

**6.3 Output Test**

Item	Description
1p FireButtonLight	To test OK button light
1P Tail Light	To test tail light of the bike
1P blower	To test the blower function
1P TicketDriver	To test the ticket driver

### 6.4 Game Reset

Item	Description
Factory restore	Whether reset all items to factory settings.
Reset Game Mode settings	Whether reset items in Game mode to factory settings.
Clear all records	Clear all bookkeeping record and daily record.
Clear owed tickets	Clear tickets haven't payout
Clear unused coin	Clear coins haven't been used.
Back	Back to the main menu

### 6.5 Date/Time Settings

Year	2014
Month	6
Day	11
Hour(24)	1
Minute	0
Second	51
Back&Save	
Back	

### 6.6 Language/语言/日本語

English
Chinese
Japanese

### 6.7 Book keeping

Player1	Coins	Tickets	Payout
1	0	0	0.00
Clear			
Back			

### 6.8 Daily Record

Date	Weekday	RunTime	Coins	Tickets	Payout
2014-06-06	Fri	00:01	0	0	0.00
Clear					
Back					



## 8. MAINTENANCE & INSPECTION

### 8.1 Safety Check

Check the points listed before operating the machine. These checks are necessary for safe machine operation:

1. Try to run the game before operation each day.
2. Conduct monthly routine checks of game components ensure good working condition
3. Check the machine regularly for dust and clean when necessary.

**Note:** Parts and components require preventative maintenance to be kept running smoothly

### 8.2 Handling Precautions

When installing or inspecting the machine, be very careful of the following points and pay attention to ensure that the player can enjoy the game safely.

Non-compliance with the following points or inappropriate handling running counter to the cautionary matters herein stated can cause personal injury or damage to the machine



#### WARNING

- Before servicing the machine, be sure to turn power off. Servicing without turning the power off can cause electric shock or short circuit.
- To avoid electric shock or short circuit, do not plug then unplug the power quickly
- Do not expose power cords and earth wires, these are susceptible to damage.
- Damaged cords and wires can cause electric shock or short circuit and should be replaced immediately.
- When or after installing the product, avoid pulling the power cord to prevent unnecessary wear and tear. Use the power button to disconnect power.
- In case the power cord is damaged, ask for replacement through where the product was purchased from or replace locally. Continued usage of damaged cord can cause fire, electric shock or leakage.
- Perform grounding appropriately. Inappropriate grounding can cause electric shock.
- Use fuses that meet specified rating. Fuses exceeding can cause an electric shock.
- Should a problem occur, turn off the power immediately and stop operating the machine. Unplug the power cord of the service outlet. Operating the machine without correcting the problem may cause a fire or injuries.
- Insert the power plug securely into the outlet. Poor contact may cause overheating, resulting in fire or burns.
- To ensure the warning labels attached on the machine are visible and legible, install the machine in a well-lit location, and keep the labels clean at all times. Make sure the labels are not hidden behind other game machines.

### 8.3 Pedal Assembly Maintenance

Pedals are wearing parts. They can last about one year under normal operation. So please change to new pedals every at least half a year or one year. If pedals do not be operated smoothly or sounds unusual, please replace it right away. Pedal is marked “R” or “L” on each pedal to distinguish the position. Make sure do not replace the wrong pedal for service.



(S121-405-000 Left pedal)

(S121-406-000 Right pedal)

#### A) To replace the left pedal

**Step 1** Power off the game. Hold the crank and use the wrench (S121-462-000) to clamp the joint of the crank and pedal. Turn the wrench in a clockwise direction to release the left pedal.

**Step 2** Install the new left pedal to the crank. Use the wrench to clamp the joint of the crank and the pedal. Turn the wrench in an anti-clockwise direction to lock the pedal.

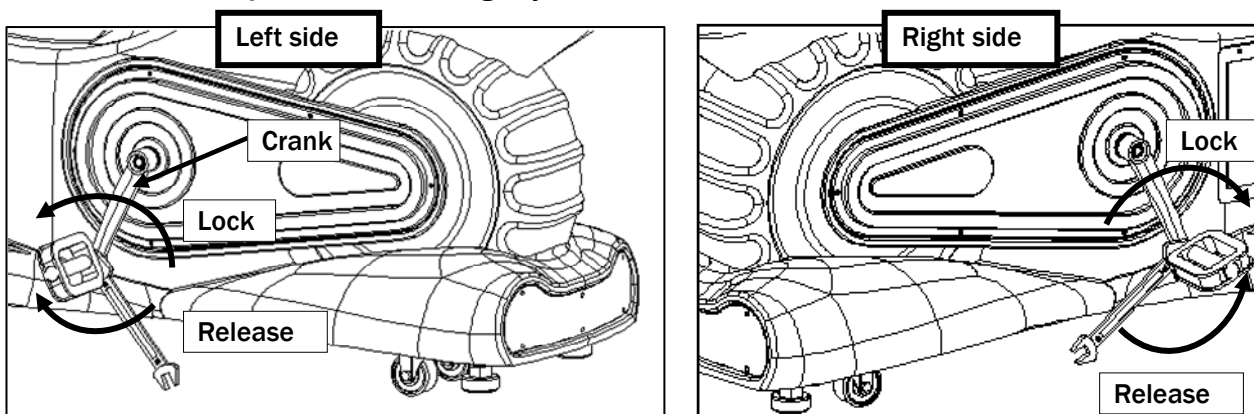
Make sure the pedal is locked tightly to the crank.

#### B) To replace the bike pedal R

**Step 1** Power off the game. Hold the crank and use the wrench (S121-462-000) to clamp the joint of the crank and pedal. Turn the wrench in an anti-clockwise direction to release the right pedal.

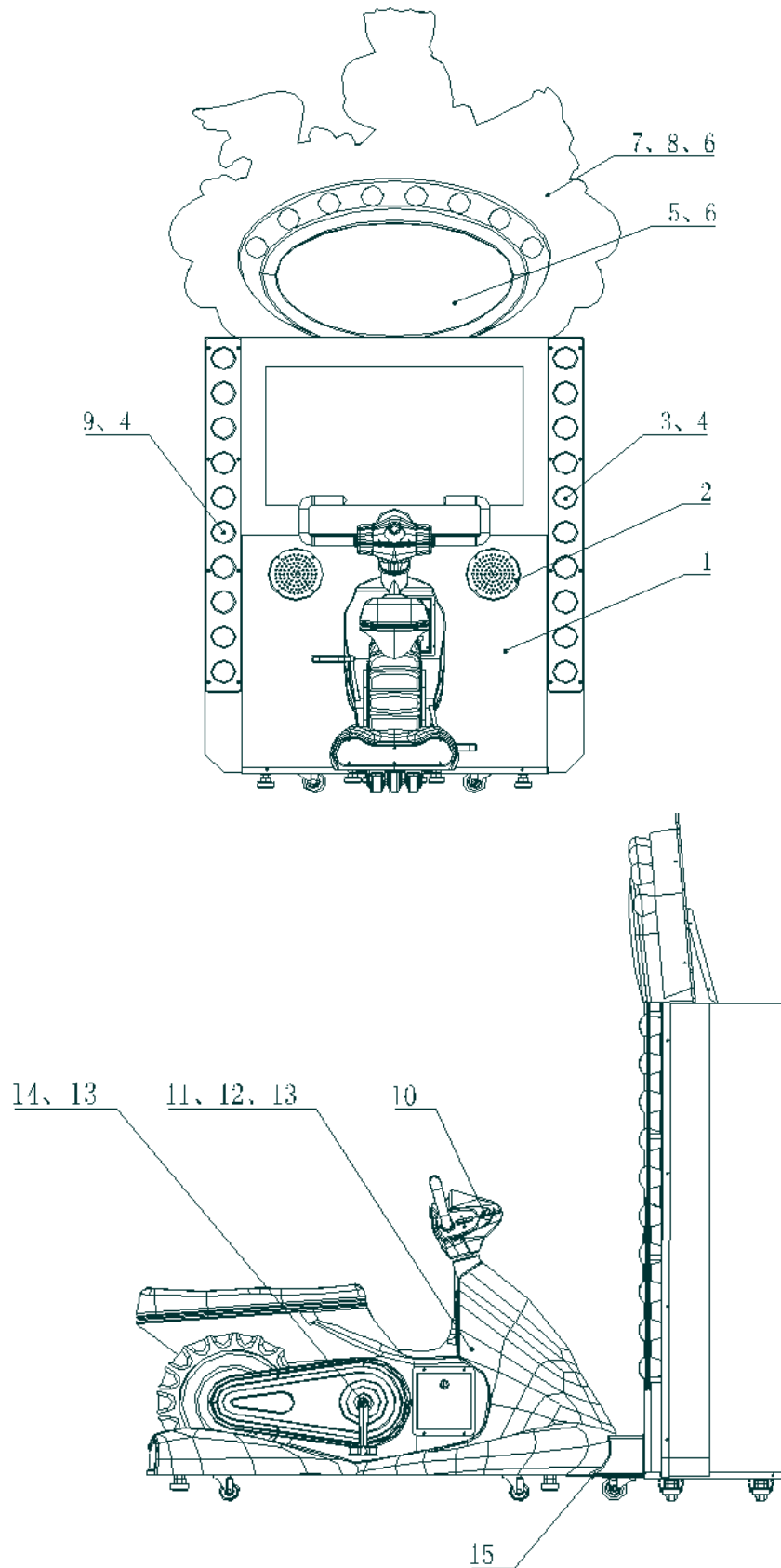
**Step 2** Install the new right pedal to the crank. Use the wrench to clamp the joint of the crank and the pedal. Turn the wrench in a clockwise direction to lock the pedal.

Make sure the pedal is locked tightly to the crank.



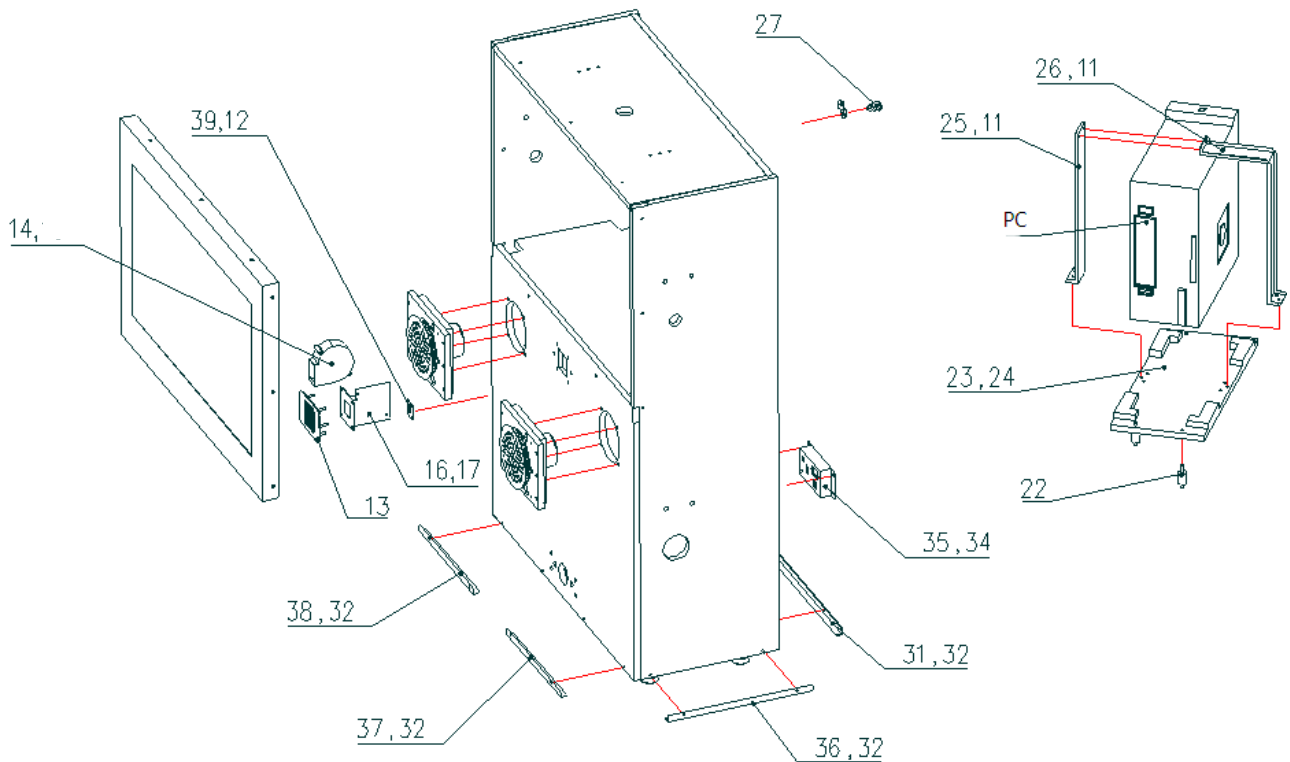
## 9. OVERALL CONSTRUCTION

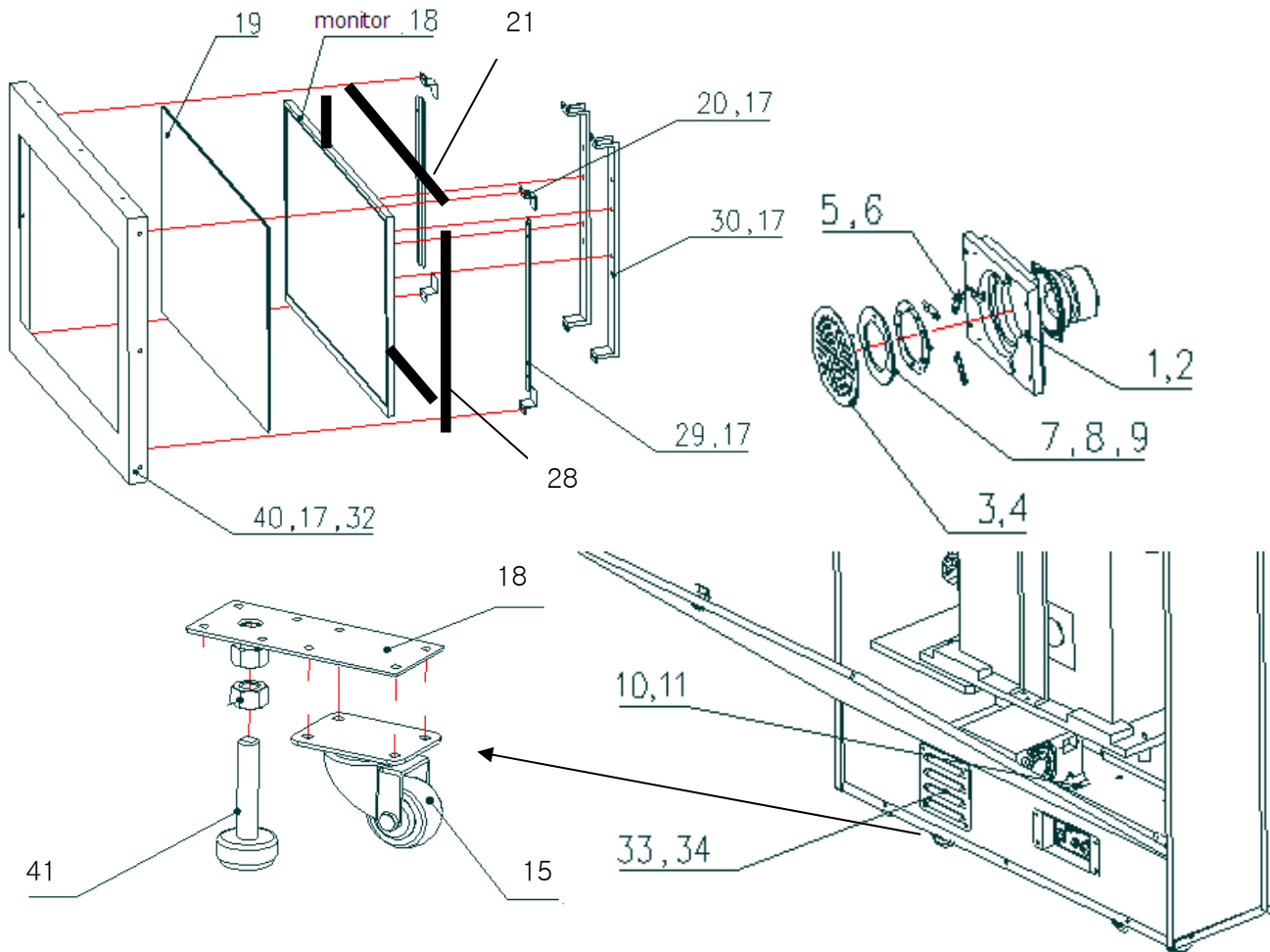
### 9.1 Main Assembly



No.	Part No.	Draw No.	Name	SPEC.	Qty
1	S121-008-000	29941337B001	Wooden cabinet	Assembly	1
2	S121-009-000	29941337002	Cabinet Assy.	Assembly	1
3	S121-004-000	29941337007	Left side light assy.	Assembly	1
4	S121-339-000	20104020006	Cross recessed hexagon	M8×30 Color Zinc	8
5	S121-011-000	29941337B004	Marquee assy.	Assembly	1
6	S121-309-000	20101020036	Cross recessed pan head screw suite	M4×16 Color Zinc	13
7	S121-712-000	20541337B002	POP sign	1180x952x5 silk screen printing	1
8	S121-354-000	20113000033	C class big flat washer	Φ4×Φ12×1h	7
9	S121-005-000	29941337008	Right side light assy.	Assembly	1
10	S121-002-000	29941337003	Bike head assy.	Assembly	1
11	S121-003-000	29941337004	Pedal assy.	Assembly	1
12	S121-342-000	20104023011	Cross recessed hexagon screw kit	M8 x 12 Color Zinc	4
13	S121-340-000	20104020026	Cross recessed hexagon screw kit	M8 x 25 Color Zinc	8
14	S121-010-000	29941337B003	Bike body assy.	Assembly	1
15	S121-122-000	20241337022	Assembly connected plate	δ3.0 blue	1

### 9.2 Main Frame Assembly

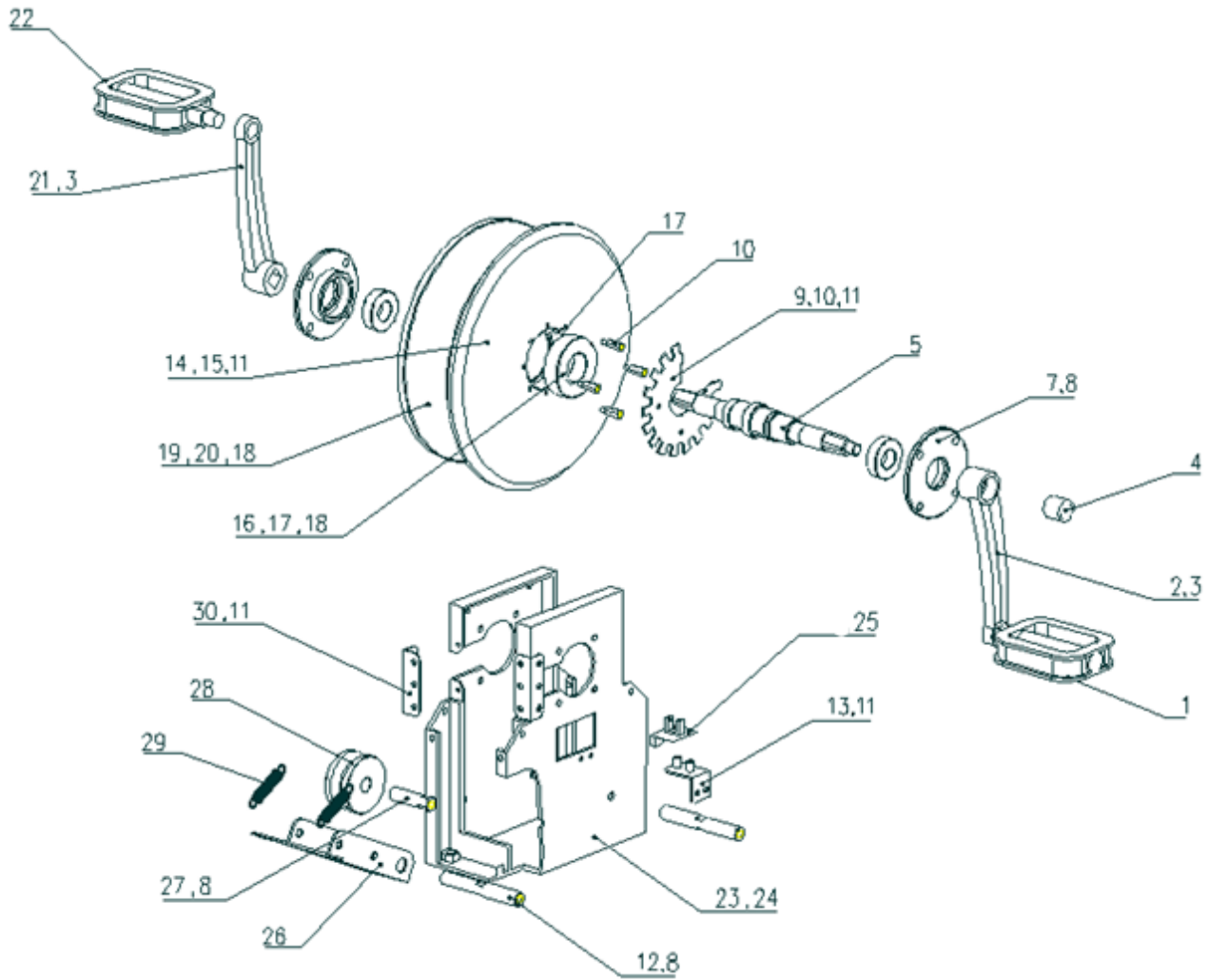




No.	Part No.	Draw No.	Name	SPEC.	Qty
1	S121-001-000	29941337002A	Speaker fixed plate	Assembly	2
2	S121-333-000	20103030023	Cross recessed sunk head self-tapping screw	ST4.2×25 White Zinc	12
3	S121-177-000	20641337009	Speaker grill	ø5.0 blue	2
4	S121-320-000	20101108019	Hexagon flat round head screws	M4×16	8
5	S121-154-000	20241337054	Light fixed plate	ø1.2	6
6	S121-329-000	20103000026	Cross recessed pan head self-tapping screw	ST2.9×6	12
7	S121-178-000	20641337010	Speaker light ring	ø3.0 white	2
8	S121-351-000	20108010002	Hexagon bolt	M3×8+6	6
9	S121-306-000	20101020033	Cross recessed pan head screw suite	M3×8 Color Zinc	18
10	S121-196-000	26000032000	PC power bracket	ø1.5	1
11	S121-309-000	20101020036	Cross recessed pan head screw suite	M4×16 Color Zinc	12
12	S121-307-000	20101020034	Cross recessed pan head screw suite	M4×10 Color Zinc	6
13	S121-116-000	20241337016	Vent net	ø1.5 blue	1
14	S121-402-000	23401000023	Blower	BA10033B12S/9733	1
15	S121-412-000	25501000056	Cabinet caster	3-2689-52	5
16	S121-117-000	20241337017	Blower bracket	ø1.2 blue	1
17	S121-324-000	20102020011	hexagon flange nut	M4 Color Zinc	26
18	S121-186-000	26000010000	Caster bracket	ø3(Color Zinc)	4

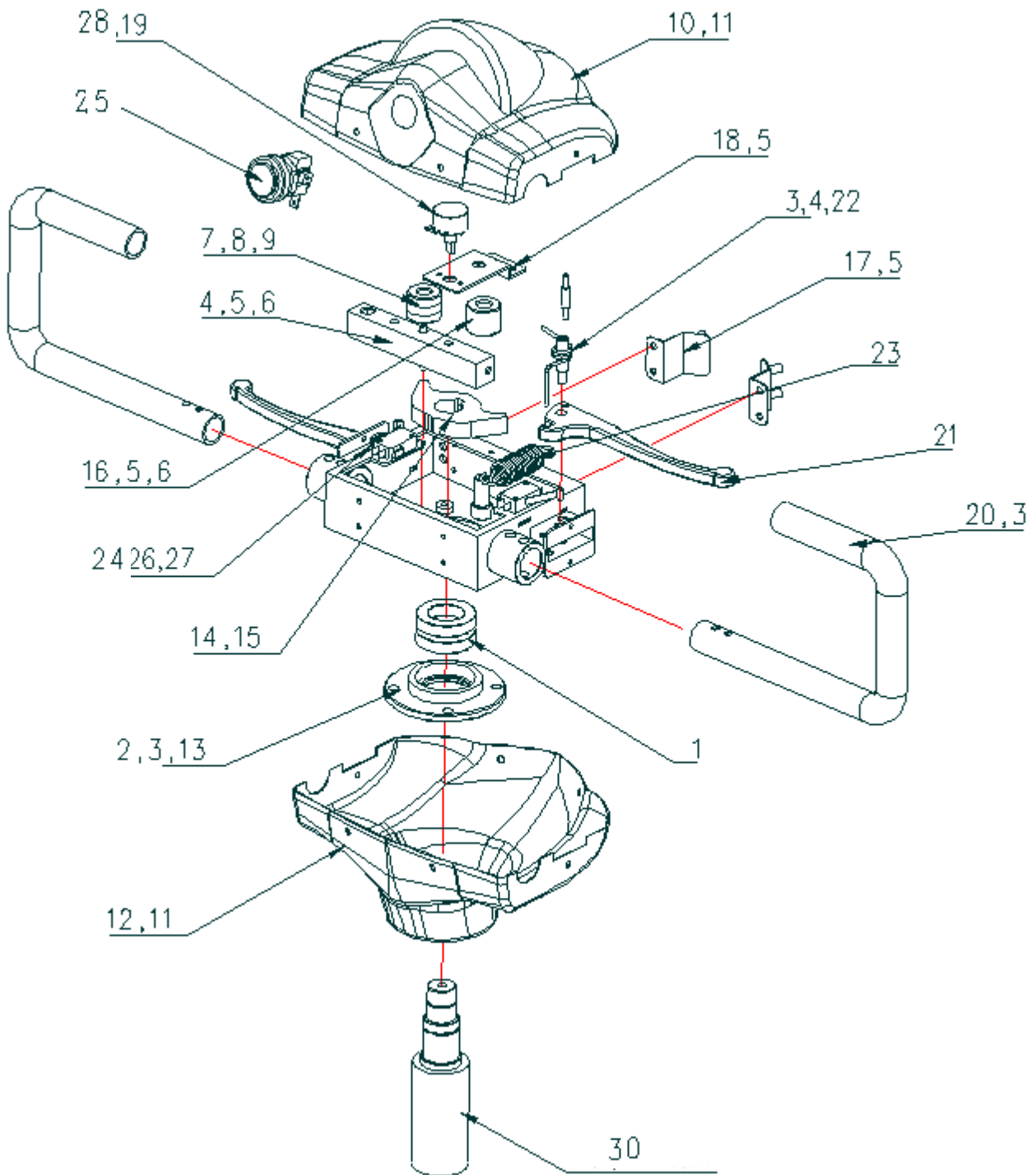
19	S121-176-000	20641337008	Monitor glass	δ5.0	1
20	S121-152-000	20241337052	Monitor holding plate	δ1.2	4
21	S121-171-000	20641337003	Monitor horizontal pad	δ2.0 black	2
22	S121-187-000	26000012000	Shake proof screw A	Color Zinc	4
23	S121-510-000	20341337013	PC bed plate	δ15	1
24	S121-325-000	20102020012	hexagon flange nut	M6 Color Zinc	4
25	S121-155-000	20241337055	PC mounted plate 1	δ1.2	1
26	S121-156-000	20241337056	PC mounted plate 2	δ1.2	1
27	S121-408-000	25300171001	Lock	171	1
28	S121-172-000	20641337004	Monitor vertical pad	δ2.0 black	2
29	S121-153-000	20241337053	Monitor side plate	δ1.2	2
30	S121-115-000	20241337015	Monitor mounted plate	δ1.2 black	2
31	S121-120-000	20241337020	Cabinet back protected bar	δ1.2 blue	1
32	S121-320-000	20101108019	Hexagon flat round head screws	M4×16	20
33	S121-190-000	26000014000	Shutter	δ1.5(black)	1
34	S121-303-000	20101010025	Cross recessed pan head screw	M4×16 black	4
35	S121-198-000	26000042000	Power outlet	Assembly	1
36	S121-121-000	20241337021	Cabinet side protected bar	δ1.2 blue	2
37	S121-119-000	20241337019	Cabinet front protected bar2	δ1.2 blue	1
38	S121-118-000	20241337018	Cabinet front protected bar1	δ1.2 blue	1
39	S121-204-000	26000055000	Dongle bracket	δ1	1
40	S121-114-000	20241337014	Monitor frame	δ1.5 red	1
41	S121-185-000	26000008000	Leveler	M16X100(Color Zinc)	8

### 9.3 Pedal Assembly



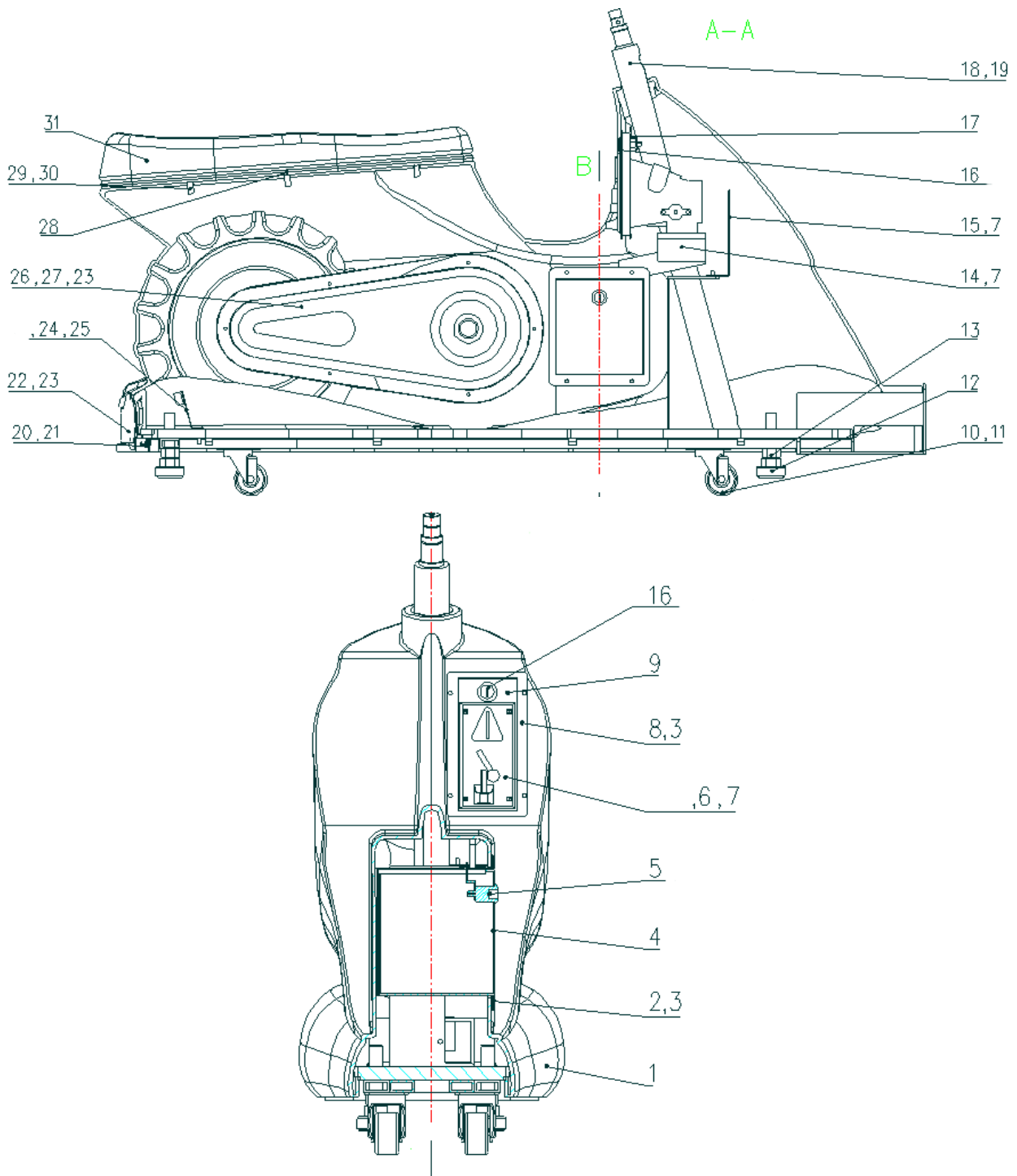
No.	Part No.	Draw No.	Name	SPEC.	Qty
1	S121-406-000	25100060002	Right pedal	Right	1
2	S121-404-000	25100050006	Right pedal crank	X102 (102)	1
3	S121-322-000	20102000047	hexagon flange nut	M10 fin thread	2
4	S121-407-000	25100070001	Pedal crank rubber cap	Black	2
5	S121-103-000	20241337003	Flywheel shaft	White Zinc	1
6	S121-348-000	20106000081	Deep groove ball BD.	6003-2Z	2
7	S121-108-000	20241337008	Flywheel BD. block	White Zinc	2
8	S121-341-000	20104023010	Cross recessed hexagon screw kit	M6×12 Color Zinc	14
9	S121-131-000	20241337031	Sensor plate	∅1.5 black	1
10	S121-352-000	20108010009	Hexagon bolt	M4×15+6	4
11	S121-308-000	20101020035	Cross recessed pan head screw suite	M4×12 Color Zinc	4
12	S121-109-000	20241337009	Swing shaft	White Zinc	2
13	S121-130-000	20241337030	Sensor bracket	∅1.5 black	1
14	S121-133-000	20241337033	Inertial wheel	White Zinc	1
15	S121-354-000	20113000033	C class big flat washer	Φ4×Φ12×1h	5
16	S121-350-000	20106150001	One-way BD.	CSK25PP	1
17	S121-362-000	20115000186	A type flat key	6×6×15	1
18	S121-363-000	20115087015	A type flat key	8×7×15	2
19	S121-134-000	20241337034	Lock-up wheel	White Zinc	1
20	S121-346-000	20105010034	A type circlip for shaft	do25 black	2
21	S121-403-000	25100050005	Left pedal crank	X102 (102)	1
22	S121-405-000	25100060001	Left pedal	Left	1
23	S121-128-000	20241337028	Flywheel bracket	∅3.0+∅4.0 black	1
24	S121-340-000	20104020026	Cross recessed hexagon screw kit	M8×25 Color Zinc	4
25	S121-424-000	21705000016	Sensor board	SENSOR MOC70T4.PCB V1.1	1
26	S121-129-000	20241337029	Ratio wheel bracket	∅2.0 black	1
27	S121-101-000	20241337001	Ratio wheel shaft		1
28	S121-164-000	20241337066	Ratio wheel	Assembly	1
29	S121-113-000	20241337013	Tension spring	∅1.0	2
30	S121-132-000	20241337032	Connected plate	∅1.5 black	2

### 9.4 Bike Head Assembly



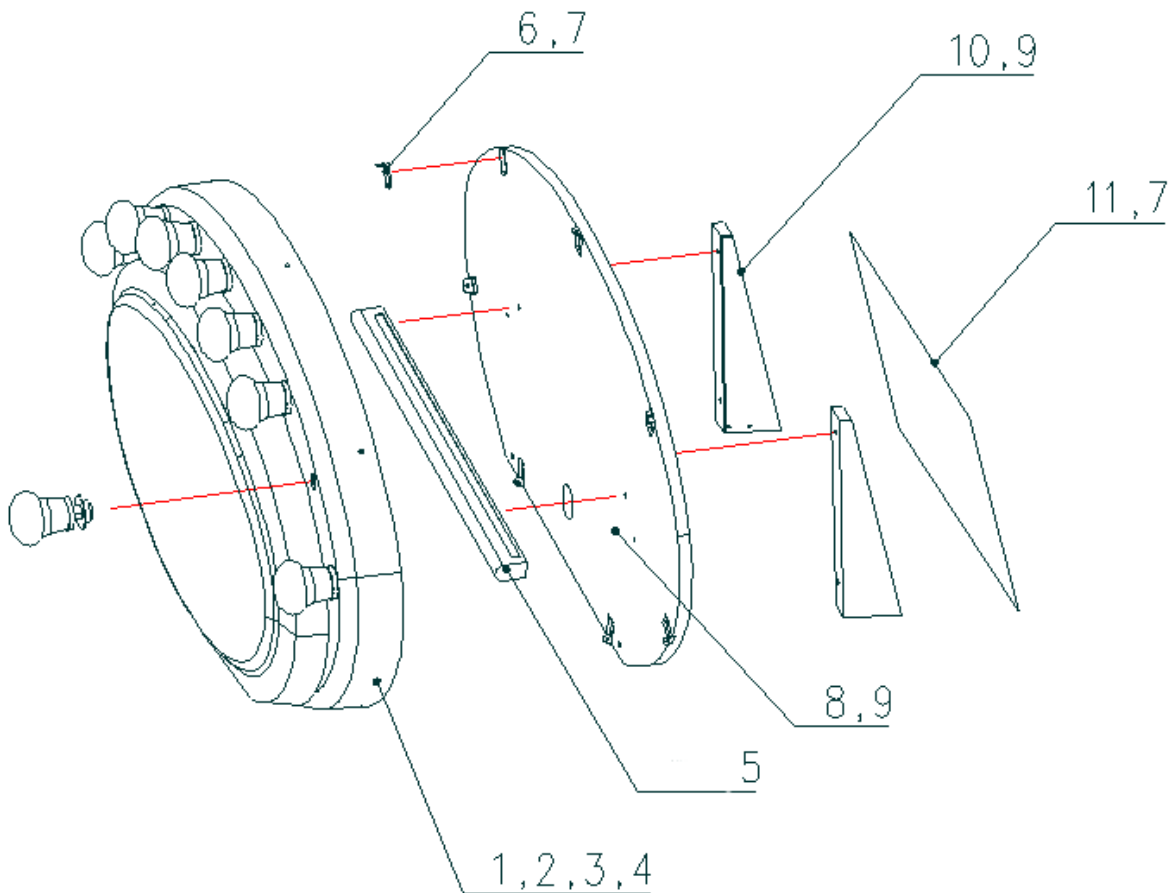
No.	Part No.	Draw No.	Name	SPEC.	Qty
1	S121-347-000	20106000065	Deep groove ball BD.	61905-2Z	2
2	S121-106-000	20241337006	Head bearing block	White Zinc	1
3	S121-341-000	20104023010	Cross recessed hexagon screw kit	M6×12 Color Zinc	8
4	20241337026	20241337026	20241337026	δ2.0 black	1
5	S121-308-000	20101020035	Cross recessed pan head	M4×12 Color Zinc	10
6	S121-354-000	20113000033	C class big flat washer	Φ4×Φ12×1h	4
7	S121-349-000	20106000313	Deep groove ball BD.	619/6-2Z	3
8	S121-304-000	20101018005	Hexagon flat round head screws	M6×25 black	1
9	S121-325-000	20102020012	hexagon flange nut	M6 Color Zinc	1
10	S121-169-000	20641337001	Head cover	δ3.0 red	1
11	S121-317-000	20101100066	Hexagon flat round head screws	M4×10	12
12	S121-170-000	20641337002	Head lower cover	δ3.0 red	1
13	S121-346-000	20105010034	A type circlip for shaft	do25 black	1
14	S121-127-000	20241337027	Eccentric wheel	δ12 White Zinc	1
15	S121-345-000	20105010033	A type circlip for shaft	do20 black	1
16	S121-182-000	20641337014	Damping sleeve	Φ24	1
17	S121-158-000	20241337058	Cover bracket	δ1.2	2
18	S121-157-000	20241337057	POT bracket	δ1.2	1
19	S121-302-000	20101010004	Hexagon flat end set screw	M5×8 black	1
20	S121-175-000	20641337007	Handle	Leather	2
21	S121-416-000	20841337001	Hand brake	Aluminum	2
22	S121-112-000	20241337012	Torsion spring 2	δ2.0	1
23	S121-111-000	20241337011	Torsion spring 1	δ2.0	1
24	S121-445-000	22604000041	Micro SW	Crouzet 83261-0-W3-8	2
25	S121-437-000	22401000091	OK button	SMALLCIRCLE COMBO	1
26	S121-111-000	20241337011	Torsion spring 1	δ2.0	1
27	S121-159-000	20241337059	SW blade	δ1.2	2
28	S121-443-000	22501000033	Head POT	RB50K	1

## 9.5 Bike Assembly



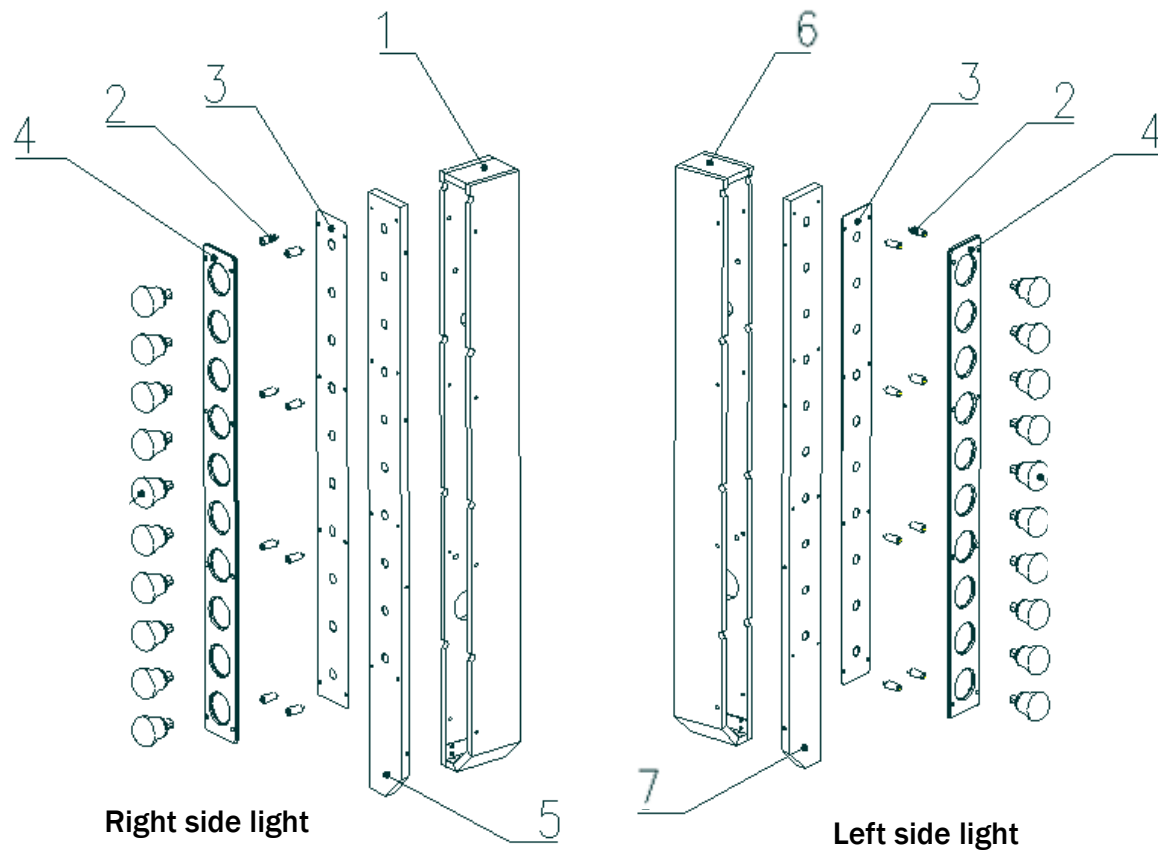
No.	Part No.	Draw No.	Name	SPEC.	Qty
1	S121-173-000	20641337005	Bike cover	δ3.0 yellow	1
2	S121-141-000	20241337041	Coin outer box	δ1.2 yellow	1
3	S121-365-000	406060500065	Rivet	Φ4×10 (Stainless steel)	10
4	S121-142-000	20241337042	Coin inner box	δ1.2 yellow	1
5	S121-410-000	25300172001	Lock	171B	1
6	S121-344-000	20104100007	Big step bolt	M4×16	4
7	S121-324-000	20102020011	hexagon flange nut	M4 Color Zinc	10
8	S121-139-000	20241337039	Coin door frame	δ1.2 yellow	1
9	S121-140-000	20241337040	Coin door	δ1.2 yellow	1
10	S121-401-000	20841202006	Caster	35X52 H75	4
11	S121-338-000	20104020004	Cross recessed hexagon screw kit	M6×25 Color Zinc	16
12	S121-185-000	26000008000	Leveler	M16X100(Color Zinc)	8
13	S121-321-000	20102000014	Hexagon nut	M16	4
14	S121-143-000	20241337043	Coin funnel	δ1.2 black	1
15	S121-168-000	20241337B001	Meter panel	δ1.5	1
16	S121-408-000	25300171001	Lock	171	1
17	S121-154-000	20241337054	Light fixed plate	δ1.2	6
18	S121-166-000	20241337068	Bike body bracket	yellow	1
19	S121-343-000	20104030006	Cross recessed hexagon screw kit	M8×30 White Zinc	1
20	S121-145-000	20241337045	Light fixed plate	δ1.2 black	12
21	S121-332-000	20103030006	Cross recessed pan head self-tapping screw	ST4.2×10 White Zinc	12
22	S121-703-000	20541337005	Tail lower light plate	78x320x3	1
23	S121-312-000	20101030006	Hexagon flat round head screws	M4×16 White Zinc	18
24	S121-160-000	20241337060	Tail lower light mounted plate	δ1.2	1
25	S121-306-000	20101020033	Cross recessed pan head screw suite	M3×8 Color Zinc	2
26	S121-702-000	20541337004	Chain right panel	601x408x3	1
27	S121-701-000	20541337003	Chain left panel	601x408x3	1
28	S121-179-000	20641337011	Seat light plate	δ12 transparent	1
29	S121-326-000	20102020023	Non-metallic hexagon lock nut	M8 Color Zinc	4
30	S121-353-000	20113000031	C class big flat washer	8×3h	4
31	S121-174-000	20641337006	Seat cushion	Leather	1

## 9.6 Marquee Assembly



No.	Part No.	Draw No.	Name	SPEC.	Qty
1	S121-011-000	29941337B004	Marquee assy.	Assembly	1
2	S121-203-000	26000053000	Rubber pad B	δ1.2	6
3	S121-311-000	20101030005	Hexagon flat round head screws	M4×12 White Zinc	6
4	S121-355-000	20113000055	C class big flat washer	4×1h	6
5	S121-415-000	20741337103	Marquee light	W5630-LC25cm-60z/ m-DC12V	1
6	S121-161-000	20241337062	Marquee fixed plate	δ2.0	6
7	S121-308-000	20101020035	Cross recessed pan head screw suite	M4×12 Color Zinc	16
8	S121-513-000	20341337016	Marquee back plate	δ15	1
9	S121-309-000	20101020036	Cross recessed pan head screw suite	M4×16 Color Zinc	17
10	S121-146-000	20241337046	Marquee support plate	δ1.5 black	2
11	S121-147-000	20241337047	Marquee cover plate	δ1.5 black	1
12	S121-354-000	20113000033	C class big flat washer	Φ4×Φ12×1h	7

## 9.7 Side Light Assembly



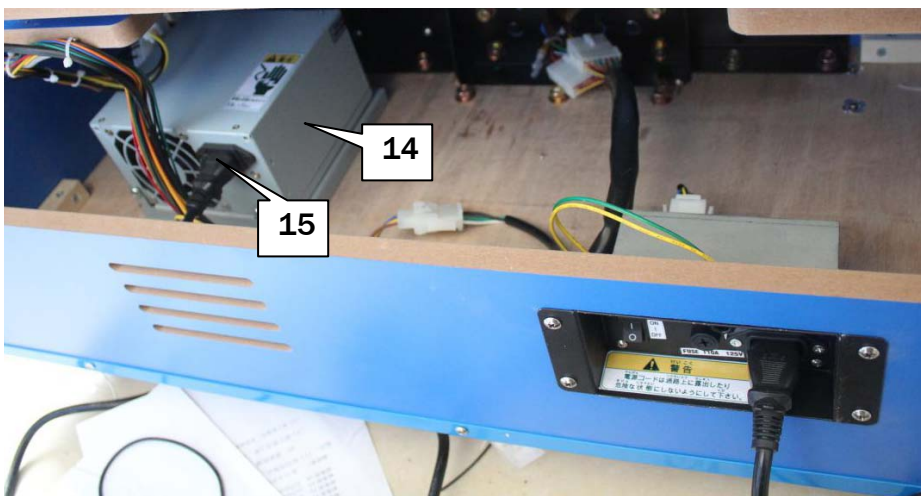
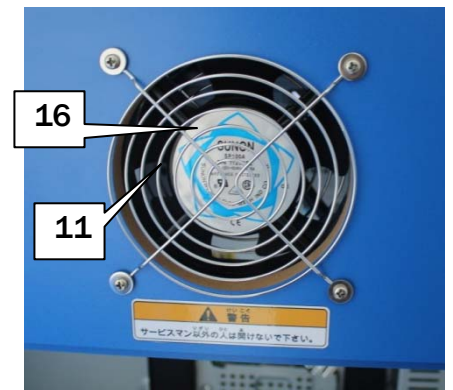
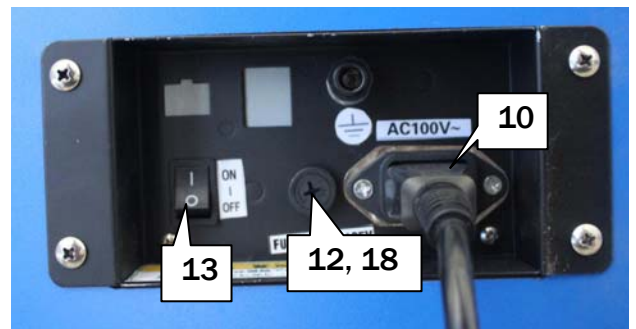
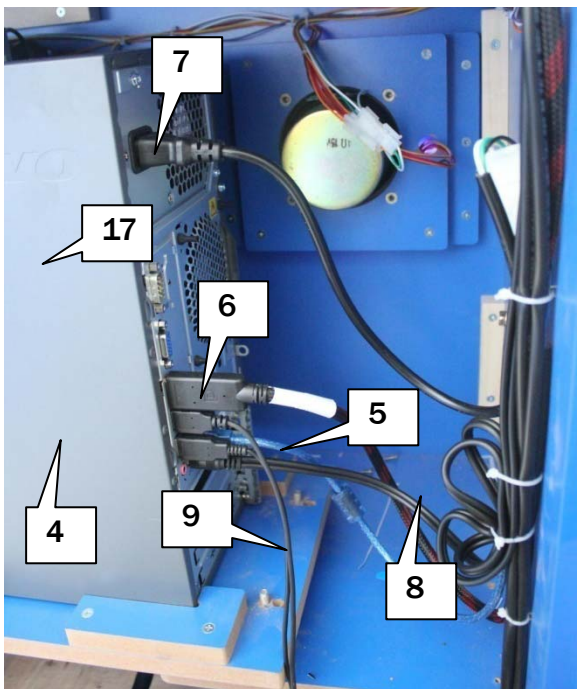
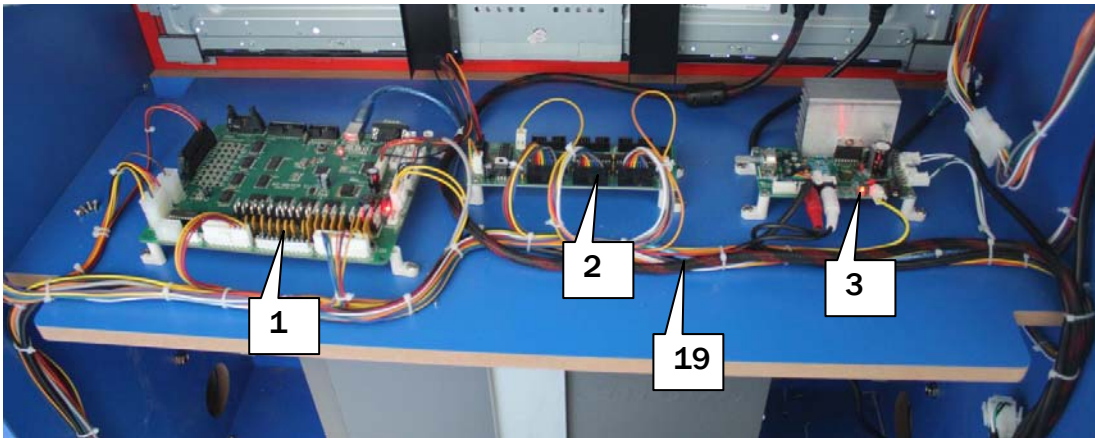
No.	Part No.	Draw No.	Name	SPEC.	Qty
1	S121-006-000	29941337008A	Right side light assy.	Assembly	1
2	S121-102-000	20241337002	Decoration shaft	Φ14	16
3	S121-181-000	20641337013	Side light mirror plate	δ1.0	2
4	S121-180-000	20641337012	Side light plate	δ8.0 transparent	2
5	S121-149-000	20241337049	Right side light panel	δ1.2 yellow	1
6	S121-007-000	2994133700A	Left side light assy.	Assembly	1
7	S121-148-000	20241337048	Left side light panel	δ1.2 yellow	1

### 9.8 Electrical Part 1



No.	Part No.	Draw No.	Name	SPEC.	Qty
1	S121-419-000	21201032006	Monitor	LT32BN88(CHD)	1
2	S121-448-000	22801000003	Speaker	4" 8Ω10W	2
3	S121-413-000	20711208001	Speaker PCB	WWQJZ-LED01.PCB(V1.0)	2
4	S121-434-000	22003070012	White light	Φ60×54.8 white JY00034	28
5	S121-431-000	22003070009	White LED	E12-15-1B9-W12V	9
6	S121-432-000	22003070010	Violet LED	E12-15-1B9-PR12V	11
7	S121-433-000	22003070011	Yellow LED	E12-15-1B9-Y12V	8
8	S121-430-000	22002017005	Bike side light	LTRGB-L105CM-DBDC12V	2
9	S121-414-000	20741337102	Seat lower light	LTRGB-L60CM-DBDC12V	2
10	S121-429-000	22002017002	Bike lower light	LTRGB-L129CM-DBDC12V	2
11	S121-435-000	22003080001	Bike tail light	W5630-LC50cm-60z/m-DC12V	1
12	S121-436-000	22301000001	Coin mech	Electronic comparison	1
13	S121-438-000	22402010002	Reset button	PB:11C02R(red)	1
14	S121-439-000	22402030002	Test button	PB:11C02R(green)	1
15	S121-440-000	22402050001	Service button	PB:11C02R(black)	1
16	S121-441-000	22403000001	POT knob	Black	1
17	S121-442-000	22501000030	5K POT	RVQ24YN03 25F B502	1
18	S121-425-000	21709000002	POT connected board	VR.PCB	1
19	S121-450-000	23000000005	Counter	C-012 DC12V	1
20	S121-451-000	23100000006	Ticket dispenser	CL-022Q-386	1

### 9.9 Electrical Part 2



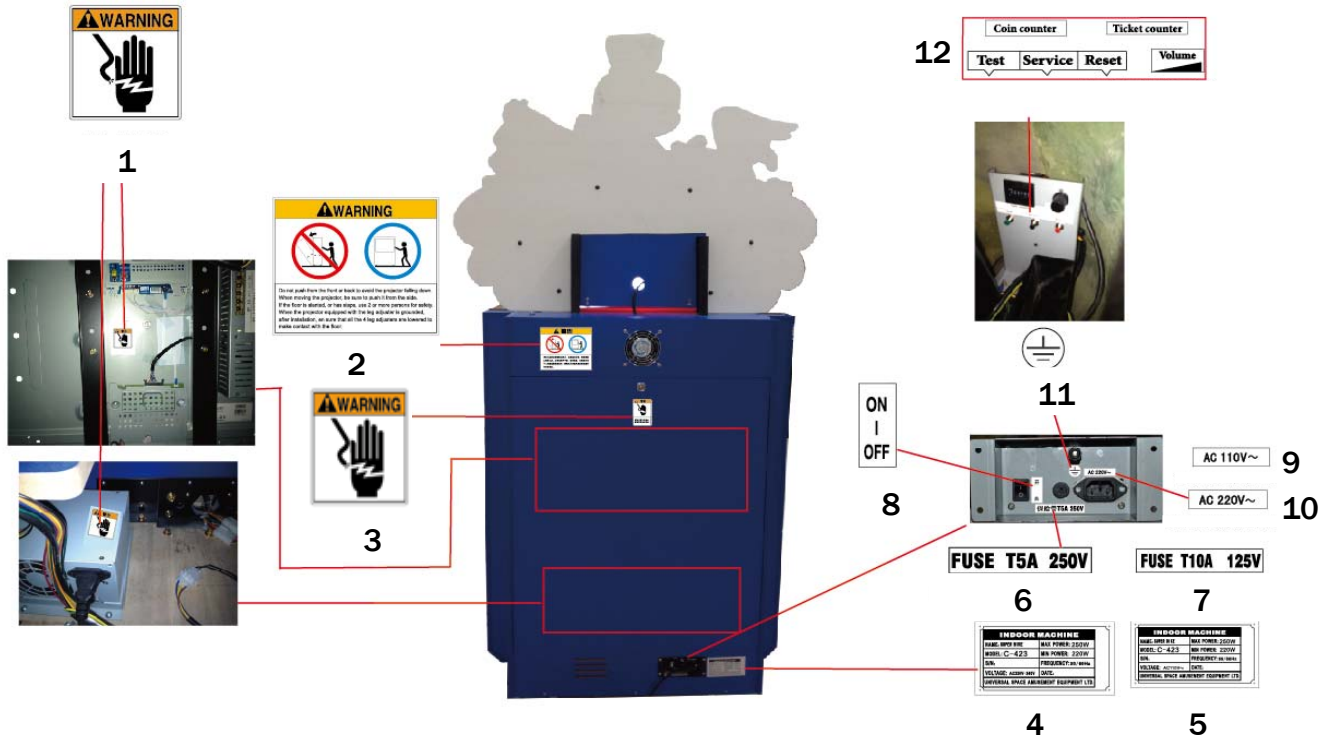
No.	Part No.	Draw No.	Name	SPEC.	Qty
1	S121-422-000	21701000029	Main board	M3_MB.PCB 150×200×2.0mm	1
2	S121-423-000	21704000214	Light controlled board	LED CON-DDL.PCB(V1.1)	1
3	S121-449-000	22803000031	AMP board	GOODCORE-25WD	1
4	S121-417-000	21101000020	Lenovo PC	M5820	1
5	S121-456-000	23304030001	USB cable	A type 1M (male-female)	1
6	S121-458-000	23307000020	DP-DVI video cable	DP-DVI 1.8m	1
7	S121-453-000	23301000001	Power Cord	10A/250V-1.8M	1
8	S121-457-000	23305000003	Audio cable	3.5 1.8M	1
9	S121-455-000	23304000021	USB data cable	A/B type 1.5m	1
10	S121-452-000	23201000001	Filter	YB10A1 10A/250V	1
11	S121-446-000	22702000002	Fan	4" 220V	1
12	S121-426-000	21901000012	Fuse	Φ5×20mm T5A 250VAC	1
13	S121-444-000	22601000005	Rocket SW	T125/55	1
14	S121-421-000	21602000001	Power supply	BTX-3039(110V220V)	1
15	S121-454-000	23301050002	Power cord	3×0.75mm 0.5m	1
16	S121-447-000	22702000010	Fan net	4"	2
17	S121-418-000	21107020036	Dongle	HASP HL PRO	1
18	S121-428-000	21902000006	Fuse socket	R3-11 110V/250V/10A	1
19	S121-459-000	23309000144	Whole cable set	for Surfer bike	1

### 9.10 Decal 1



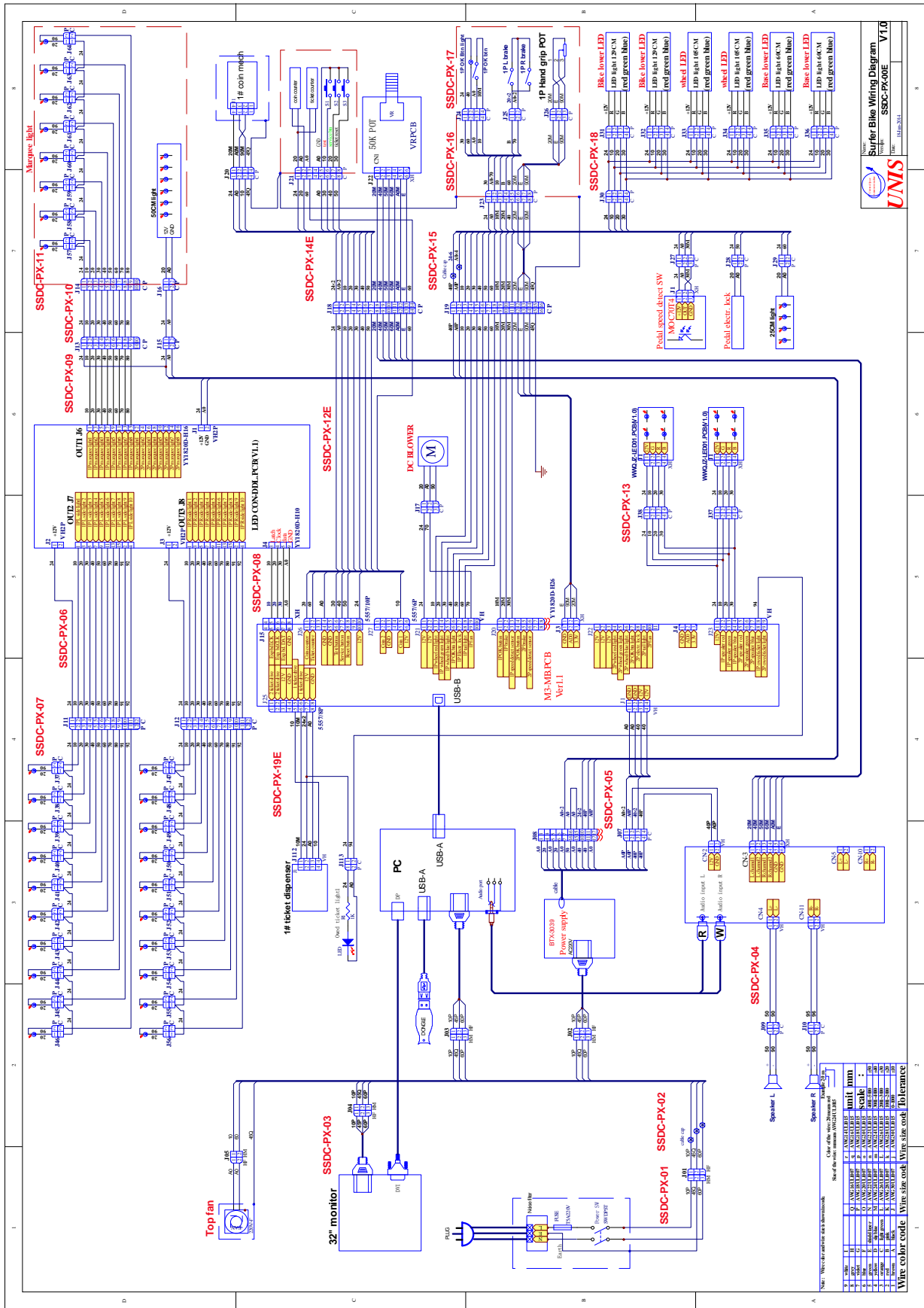
No.	Part No.	Draw No.	Name	SPEC.	Qty
1	S121-711-000	20541337B001	Marquee sign	1034x621x5	1
2	S121-714-000	20541337B004	Monitor frame decal	835x565	1
3	S121-713-000	20541337B003	Cabinet side decal	226x1260	1
4	S121-717-000	20541337B007	OK button decal	20x20	1
5	S121-701-000	20541337003	Chain left panel	601x408x3	1
6	S121-702-000	20541337004	Chain right panel	601x408x3	1
7	S121-705-000	20541337011	GO decal	150x81	1
8	S121-710-000	20541337019	SURF decal	149x32	1
9	S121-709-000	20541337018	Meter panel decal	101x43	1
10	S121-728-000	25600000034	TICKET decal	62x20	1
11	S121-704-000	20541337010	Bike left decal	555x243	1
12	S121-706-000	20541337012	Bike right decal	555x252	1
13	S121-707-000	20541337016	Wheel left decal	215x212	1
14	S121-708-000	20541337017	Wheel right decal	215x212	1
15	S121-703-000	20541337005	Tail lower light plate	78x320x3	1
16	S121-712-000	20541337B002	POP sign	1180x952x5	1
17	S121-715-000	20541337B005	Monitor lower decal	831x739	1

### 9.11 Decal 2



No.	Part No.	Draw No.	Name	SPEC.	Qty
1	S121-721-000	25600000036	Warning label - S	41×42	2
2	S121-723-000	25600000060	Movement warning label	203×168	1
3	S121-722-000	25600000037	Warning label - L	62×88	1
4	S121-718-000	20541337B008	Uncertified 220V nameplate	128x68	1
5	S121-719-000	20541337B009	Uncertified 110V nameplate	128x68	1
6	S121-726-000	25600000074	T5A fuse label	33X6	1
7	S121-730-000	25600000083	T10A fuse label	33X6	1
8	S121-720-000	25600000017	Rocket SW label	8×18	1
9	S121-724-000	25600000071	110V label	25X6	1
10	S121-725-000	25600000072	220V label	25X6	1
11	S121-727-000	25600000091	GND label	12X12	1
12	S121-716-000	20541337B006	Coin counter label	90x22	1



# 10. Wiring Diagram





**Have Questions? Contact us!**

[www.universal-space.com](http://www.universal-space.com)

 <b>International Support Center</b>	 <b>USA Support Center</b>
Tel: +1-905-477-2823 Fax: +1-905-477-2660 Email: <a href="mailto:service@universal-space.com">service@universal-space.com</a> (Contact: Clement Yau)	Tel: 972-241-4263 Fax: 214-919-4918 Email: <a href="mailto:tsnelling@unisusasupportcenter.com">tsnelling@unisusasupportcenter.com</a> (Contact: Tim Snelling)